



**USER MANUAL**  
**Graphic WallPod**  
**Model #: nPOD GFX**  
v.2; software version E

Congratulations on your purchase of the nLight Graphic WallPod (nPOD-GFX). The Graphic WallPod is a powerful and sophisticated user interface for an nLight controlled space. The Graphic WallPod is a multichannel user control device which displays up to 16 individual channels of control, up to 8 lighting presets and 8 lighting scenes. A control is activated by simply touching the screen. The Graphic WallPod automatically discovers (i.e. locates) all devices once the unit is powered on.

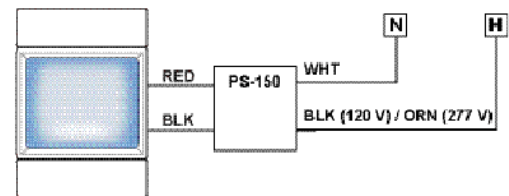
In this instruction manual, there are four sections:

- Installation Instructions
- Quick Start Guide
- User Manual
- Appendix

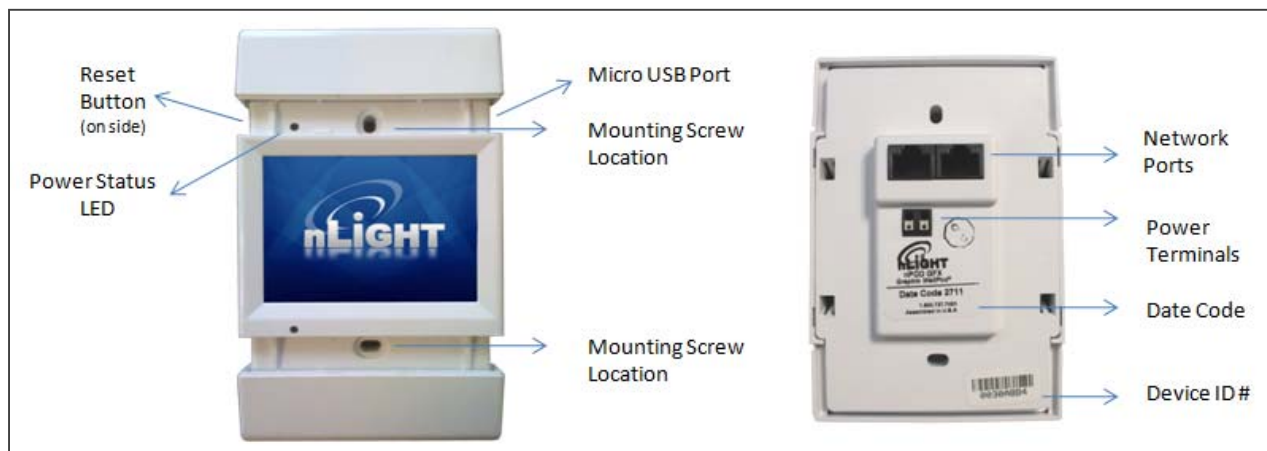
## Installation Instructions

### HARDWARE FEATURES

There are two RJ-45 ports on the rear of the Graphic WallPod for CAT5 connection to other nLight-enabled devices. Additionally, there is a set of power terminals where low voltage power from the provided power supply module (model # PS150) is connected or mud ring.



The Graphic WallPod flush mounts to a single-gang switch box. The housing has two sliding panels that cover the mounting screws, an indicator LED, a reset button, and a micro-USB style port. This port is provided as a convenient location for which to connect a laptop running the nLight SensorView software. While not needed for setup and configuration of the Graphic WallPod, SensorView is required to perform advanced configuration and firmware upgrades of devices within the Graphic WallPod's local zone. Remote access and control is available via SensorView if the zone is connected to an nLight backbone with a Gateway. **Note:** no power is used/supplied from/to the nLight bus.



1. *Before mounting*, connect Class 2 low voltage wires from power supply to power terminal connections (polarity insensitive)

2. Verify unit has power by observing screen and/or LED
3. Connect CAT-5 cable(s) from local zone of nLight-enabled devices or nLight Bridge to RJ-45 port(s)
4. Unit will begin discovering connected devices (indicated by on-screen message box)
5. Mount unit to standard single gang switch box (screws provided)
6. Pressing reset button twice is equivalent to repowering unit

Do not over tighten mounting bracket screws. Over tightening may damage the touch screen or cause it to be unresponsive on the outer edges of the touch screen.

Each nLight device comes with an extra device ID number sticker; please keep the extra label with device location for your records.

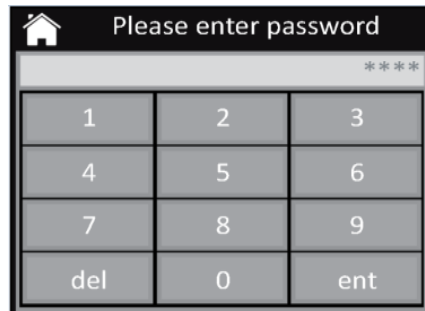
## Quick Start Guide

Initial Upgrade: All nLight devices connected to the Graphic WallPod should be upgraded to the current application firmware to ensure best operation. Devices need to be at least to Version L to be compatible. (See Appendix for firmware update instructions)

1. The default configuration presents two on-screen WallPods. WallPods will control locally connected devices tracking switch channels 1 and 2 respectively.
2. For adding or editing WallPod controls and/or creating presets, press the *Lock* in the upper left hand corner of the screen
  - a. The default password is "1234"
3. For quick help in the set-up screens, press the *Question Mark* in the upper right hand corner of the screen
4. Technical Support – please call Sensor Switch at 1.800.PASSIVE.

**Changing default Password** – The factory default password can be changed.

1. Press the *LOCK* icon in the upper left corner of the screen
2. Enter WallPod password, factory default "1234", press ENT
3. Select *nPOD-GFX Setup*
4. Select *Change Password*
5. Enter new password, press ENT



6. Re-enter new password, press ENT
7. Password set, returned to *nPOD-GFX Setup* screen

**WallPod** – This feature selection you to add switches to the WallPod for the room to be controlled by the Graphic WallPod; 16 switches total.

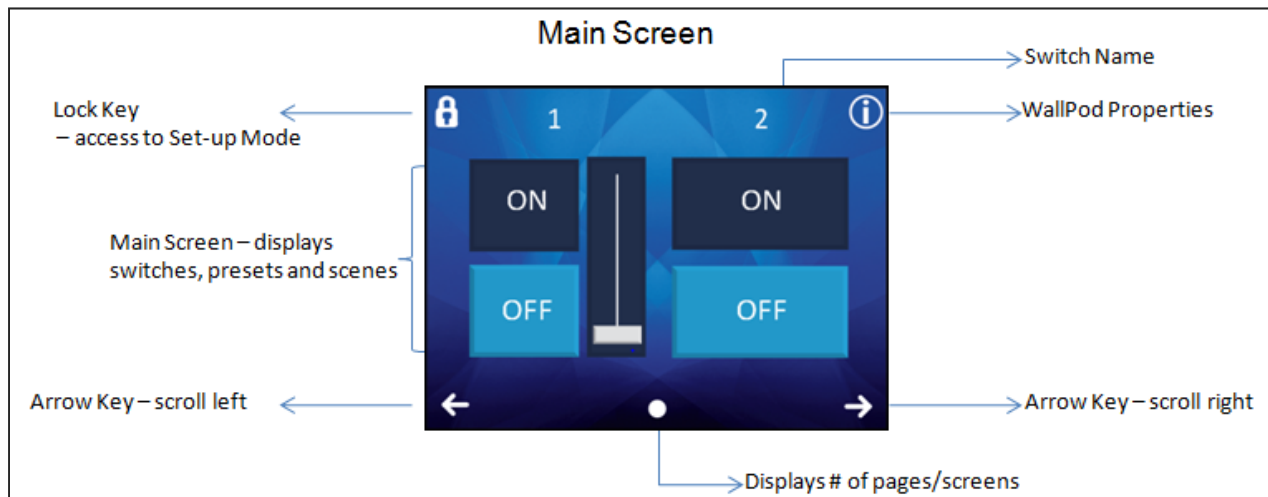
1. Press the *LOCK* icon in the upper left corner of the screen
2. Enter WallPod password, press ENT
3. Select WallPod (1-16)
  - a. A selected channel is white
  - b. De-selecting a channel is dark and will remove the switch from the WallPod
4. Press CONT
5. Scroll to left or right using small arrows until switch number is viewable
6. Press EDIT to change label name
7. Use on screen keyboard to edit label name
8. Press SAVE
9. Select Switch or Dimmer
10. Select the On/Off
11. If Dimmer is selected, select dim level using slide bar
12. Press Large left arrow at the top of the screen to SAVE
13. Press SAVE to confirm changes

## User Manual

Once the installation of the nLight Graphic WallPod has been completed and the unit is receiving power, the screen will display the nLight logo.

Touch Screen Saver to view Main Screen

### Screensaver



### Home Page Icons

Lock

Description area

Information (circle i)

Lower left/right arrow

Lower center dot(s)

On button

Off button

Slide bar

Presets

Settings menu (password protected)

Switch name displayed

WallPod properties

Use Left and Right arrows to scroll to pages

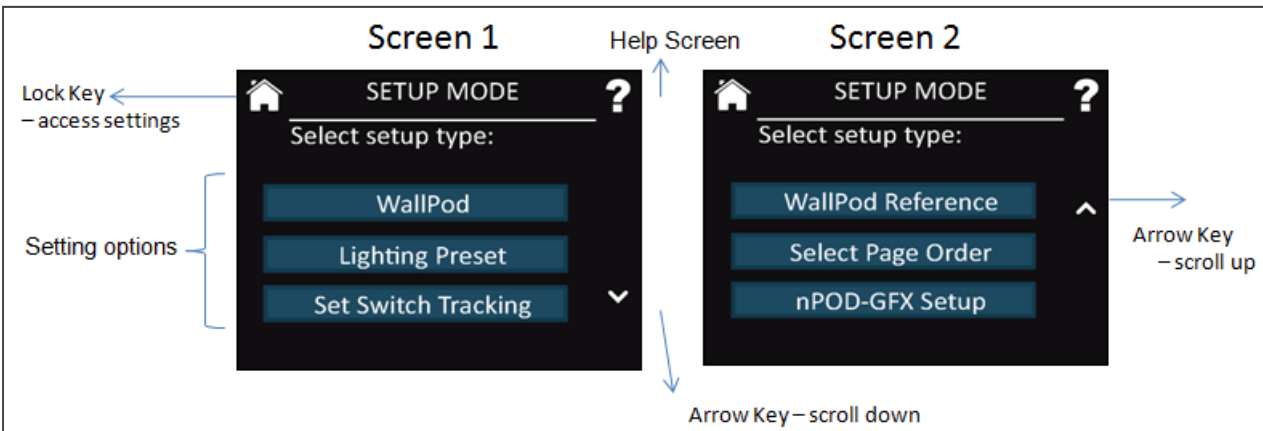
Indicates number of pages

Switch is on

Switch is off

Dimming level

Lighting groups (not pictured)



### Setup Mode Display Icons

Home	Return to Main Screen
Question Mark	Help Screen
Down/Up arrows	Use UP and DOWN arrows to page through the settings choices (down arrow pictured)
Top left/right arrow	Use the LEFT and RIGHT Arrow to scroll to the left/right pages (not pictured)

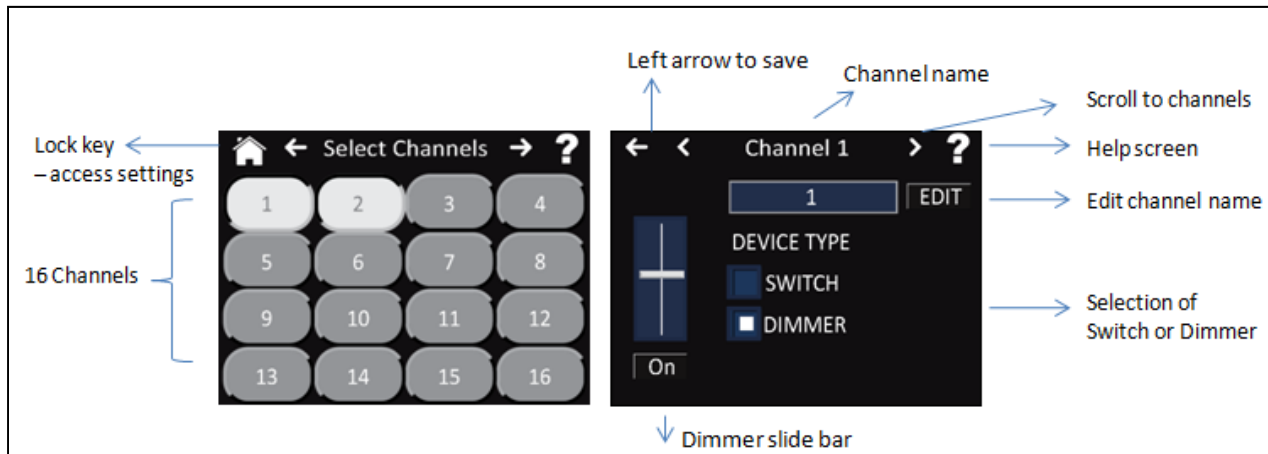
### Setup Mode

The *Setup Mode* is used to customize the features of the WallPod. The settings can be customized by wall switch, lighting preset, channel assignment, wallpod reference and page order. Additionally, in this mode the following can be modified: password, device label, display settings, factory reset and clear scenes. The selections on the set-up screens are as follows:

1. WallPod
2. Lighting Preset
3. Set Switch Tracking
4. WallPod Reference
5. Select Page Order
6. nPOD GFX Setup

The default password for the Setting pages is “1234” (screen shot on page 4).

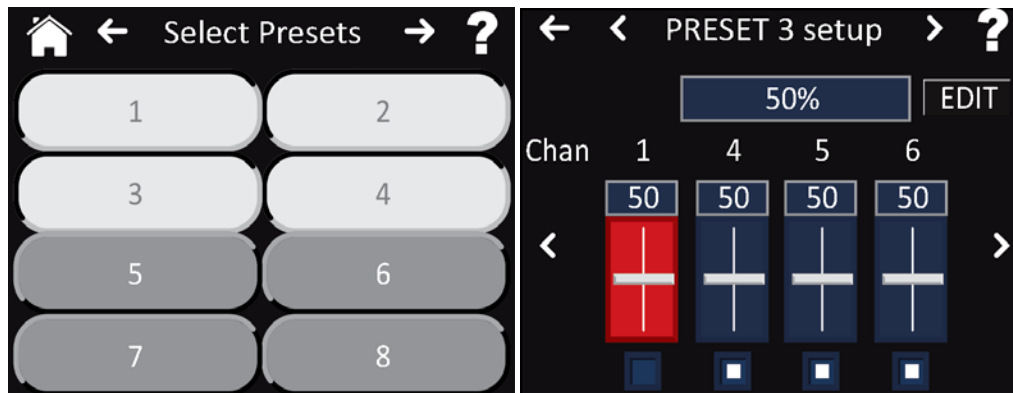
**WallPod** – This feature enables you to add switches and dimmers to the Graphic WallPod; 16 total.



1. Press the *LOCK* icon in the upper left corner of the screen
2. Enter WallPod password, press ENT
3. Select any/all wallpods required (1-16)
  - a. A selected channel is white
  - b. De-selecting a channel is dark and will remove the switch/dimmer from the WallPod
4. Press CONT
5. Scroll to left or right using small arrows until switch number is viewable
6. Press EDIT to change label name
7. Use on screen keyboard to edit label name
8. Press SAVE
9. Select Switch or Dimmer
10. Select the On/Off
11. Press Large left arrow at the top of the screen to SAVE
12. Press SAVE to confirm changes



**Lighting Preset** – This selection allows you to set which lights turn on and to what level when one of the lighting preset buttons are selected. For example, a preset can be created with the label “50%” that sets all lights controlled on switch channels 4, 5 and 6 to 50%. Up to 8 presets can be created and stored in each Graphic WallPod.



1. Press the *LOCK* icon in the upper left corner of the screen
2. Enter password, press ENT
3. *Setup Menu* is displayed, select *Lighting Preset*
4. Select the number of any/all of the Presets required:
  - a. White indicates the preset is in use
  - b. Black indicates the preset is not in use
5. After selection is made (depressed number has a white background), select the left arrow at top of screen
6. New selection confirmation, select CONT
7. Scroll using small arrows at top of screen to the preset # selected in step 5
8. Press EDIT, to change the Label for the preset; i.e. 50%
9. Use DEL button to delete default text; use keyboard on-screen to enter in new text
10. SAVE Changes
11. Modify the lighting controls located under the label field (on/off, dimming slide)
12. To save changes, press the top left arrow
13. Select SAVE
14. Changes saved, returned to Setup menu

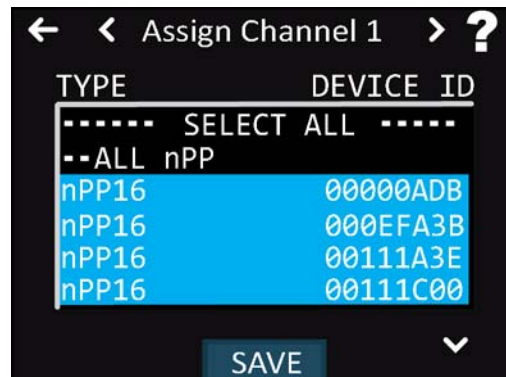
Touch the bottom of the channel slider to remove a channel from the preset. The channel will turn red when deselected. (pictured above)

### **Edit a Lighting Preset – Modifying the conditions of a preset.**

1. Press the *LOCK* icon in the upper left corner of the screen
2. Enter password, press ENT
3. Select *Lighting Preset*
4. Press the small arrows at the top of the screen, scrolling shows ALL active presets
5. Small arrows in middle of the screen, show channels for each preset
6. Modify settings using touch screen
7. Press large left arrow at top of screen to save changes
8. Confirmation screen, press Save or Cancel



**Set Switch Tracking** – An nLight zone has 16 separate “switch channels” on which devices can communicate. This feature allows you to select the channel(s) on which each device in the graphic WallPods zone will track manual switching/dimming commands. These commands may originate from the Graphic WallPods, Push Button WallPods or Virtual WallPods (on a PC or Smartphone).



1. Press the LOCK icon in the upper left corner of the screen
2. Enter password, press ENT
3. *Setup Menu* is displayed, select *Set Switch Tracking*
4. All devices recognized by Graphic WallPod will be displayed by model number and by device ID
5. Select Channel (1 thru 16) by using small arrows at the top of the screen
6. Select desired devices to be controlled by the respective switch
  - a. For example, screen shot above shows all four nPP16 devices are selected to track on switch channel 1
  - b. Selection is highlighted
7. Repeat as necessary for each channel (1-16)
  - a. If needed, select the switch channel for a device on Pole 2
8. Press SAVE to store settings

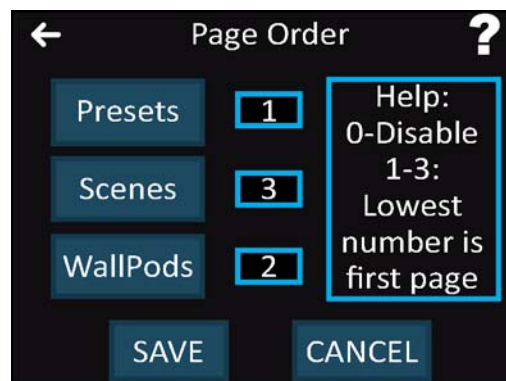
Some devices have two poles; therefore they can track two channels simultaneously.

**WallPod Reference** – This screen indicates which devices’ dimming output the on-screen WallPod will track. Edits can be made per channel from this screen.

1. Press the LOCK icon in the upper left corner of the screen
2. Enter password, press ENT
3. *Setup Menu* is displayed, Select *WallPod Reference*

4. All devices recognized by Graphic WallPod will be displayed by channel showing device type and device ID
5. Select Channel (1 thru 16) by using small arrows
6. Select the device which will have its output referenced by the channel's onscreen WallPod
7. Selection is highlighted
8. Repeat as necessary
9. Press Save

**Select Page Order** – This feature allows customization of the order of information viewed on the WallPod; Presets, Switches or Scenes.



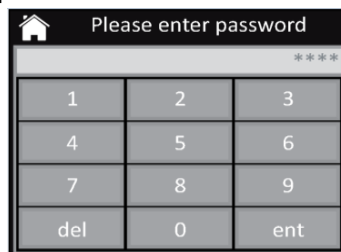
1. Press the *LOCK* icon in the upper left corner of the screen
2. Enter WallPod password, press ENT
3. *Setup Menu* is displayed, *Select Page Order*
4. Press each button (Presets, Scenes or WallPods) for the page order
  - a. Press Presets once, a number 1 will appear in the box, Presets will be viewed first
  - b. Press Presets twice, a number 2 will appear in the box, Presets follow the first selection
  - c. Press Presets three times, a number 3 will appear in the box, Presets will follow the second selection
  - d. Press Presets four times, a number 0 this will appear in the box and Presets will not be displayed
5. Press Save to store settings

## nPOD GFX Setup

The nPOD GFX setup allows customization of the basic settings of the WallPod, such as, password, device label, screen settings, restoring factory settings and clearing scenes.

**Changing the Password** – The factory default password can be changed.

1. Press the *LOCK* icon in the upper left corner of the screen
2. Enter WallPod password, factory default “1234”, press ENT
3. Select *nPOD GFX Setup*
4. Select *Change Password*
5. Enter new password, press ENT

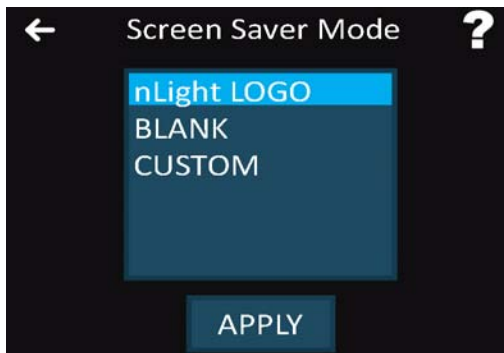


6. Re-enter new password, press ENT
7. Password set, returned to *nPOD GFX Setup* screen

**Editing Label** – This feature will rename Graphic WallPod device; i.e. Lobby.

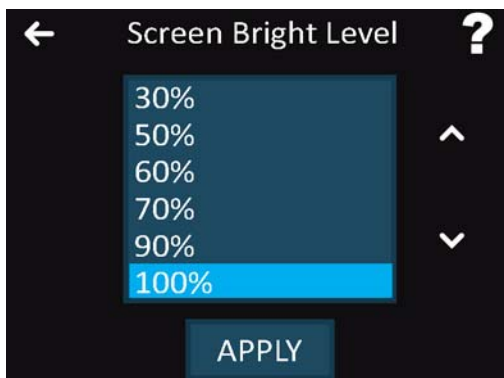
1. Press the *LOCK* icon in the upper left corner of the screen
2. Enter WallPod password, press ENT
3. Select *nPOD GFX Setup*
4. Select *Edit Label*
5. Type in label name, i.e. Lobby
6. Press Save
7. Device Label set, returned to *nPOD GFX Setup*

**Screen Saver Mode** – The screen saver can be customized. The default screensaver is the nLight logo. The screen saver options are; the nLight logo, a blank screen or a custom image.



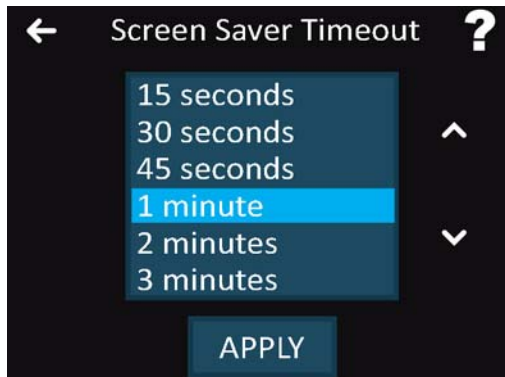
1. Press the *LOCK* icon in the upper left corner of the screen
2. Enter WallPod password, press ENT
3. Select *nPOD GFX Setup*
4. Select *Screen Saver Mode*
5. Select *nLight Logo, Blank or Custom*
  - nLight logo – default, will displayed when WallPod is not in use
  - Blank – the WallPod will have display the first page of the WallPod
  - Custom – select a custom image for display when the WallPod is not in use  
(If Custom is selected, please follow the instructions listed in the Appendix)
6. Press Apply
7. Change saved, returned to *nPOD GFX Setup*

**Screen Bright Level** – This setting modifies the brightness level of the WallPod.



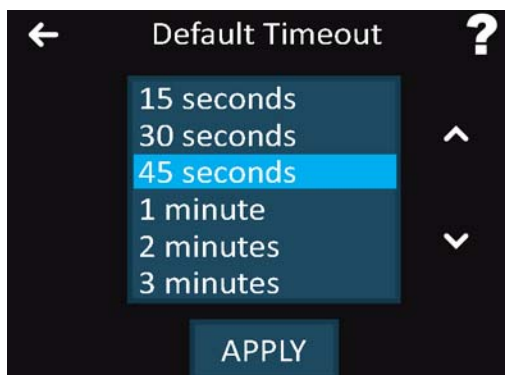
1. Press the *LOCK* icon in the upper left corner of the screen
2. Enter WallPod password, press ENT
3. Select *nPOD GFX Setup*
4. Select *Screen Bright Level*
5. Scroll to % of Screen Bright Level (use scrolling arrows to display selections not visible)
6. Select %
7. Press Apply
8. Change saved, returned to *nPOD GFX Setup*

**Screen Saver Timeout** - This setting modifies the time setting for the screensaver to engage once the WallPod is idle.



1. Press the *LOCK* icon in the upper left corner of the screen
2. Enter WallPod password, press ENT
3. Select *nPOD GFX Setup*
4. Select *Screen Saver Timeout*
5. Scroll to desired time for the screen to timeout (9 options - 15 seconds to infinite)
  - a. use the scrolling arrows to display time options not visible
6. Select time
7. Press Apply
8. Change saved, returned to *nPOD GFX Setup*

**Default Timeout** – This feature will set the length of time the setup screens will be viewable after the screen is idle.



1. Press the *LOCK* icon in the upper left corner of the screen
2. Enter WallPod password, press ENT
3. Select *nPOD GFX Setup*
4. Select *Default Timeout*

5. Scroll to desired time for the screen to timeout (9 options: 15 seconds to infinite)
  - a. use the scrolling arrows display time options not visible
6. Select time
7. Press Apply
8. Change saved, returned to *nPOD GFX Setup*

**Backlight Dim Timeout** - This feature will set the time for the dim level to engage once the WallPod is idle.



1. Press the *LOCK* icon in the upper left corner of the screen
2. Enter WallPod password, press ENT
3. Select *nPOD GFX Setup*
4. Select *Backlight Dim Timeout*
5. Scroll to desired time for the screen to timeout (9 options: 15 seconds to infinite)
  - a. use the scrolling arrows able to display time options not visible
6. Select a time
7. Press Apply
8. Change saved, returned to *nPOD GFX Setup*

**Backlight Dim Level** - This setting modifies the dimming level of the idle WallPod.



1. Press the *LOCK* icon in the upper left corner of the screen
2. Enter WallPod password, press ENT
3. Select *nPOD GFX Setup*
4. Select *Backlight Dim Level*
5. Scroll to % of Backlight Dim Level
  - a. Use the scrolling arrows to display %'s not visible
  - b. Use 0% to set the screen to off once the backlight dim time out is reached
6. Select %
7. Press Apply
8. Change saved, returned to *nPOD GFX Setup*

**Factory Reset** – Returns all settings to the factory specifications.

1. Press the *LOCK* icon in the upper left corner of the screen
2. Enter WallPod password, press ENT
3. Select *nPOD -GFX Setup*
4. Select *Factory Reset*
5. Select Delete or Cancel (delete will confirm factory reset)
6. Press Delete to restore factory settings
7. Factory Settings restored

**Clear Scenes** - Removes all scenes.

Scenes can only be programmed from SensorView software.  
However, the scenes may be deleted from the device.

1. Press the *LOCK* icon in the upper left corner of the screen
2. Enter WallPod password, press ENT
3. Select *nPOD GFX Setup*
4. Select *Clear Scenes*
5. Select Delete or Cancel (delete will confirm Clearing of Scenes)
6. Press Delete clear all programmed scenes
7. Scenes have been cleared

## **TECHNICAL SUPPORT**

**For technical support, please contact us at:**

**1-800-PASSIVE (800-727-7483)**  
**Monday to Friday - 8 AM to 7 PM EST**  
**tech@sensorswitch.com**



## Screen Saver: Custom Image Installation via SensorView

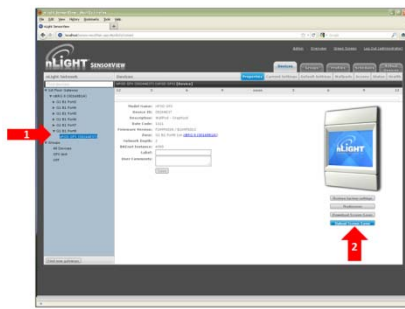
The custom image can be uploaded to the Graphic WallPod through SensorView software. Please be sure that to have downloaded SensorView and connected with your devices prior to following the instructions below.

The nPOD GFX must be upgraded to Rev E before an image can be added to the WallPod

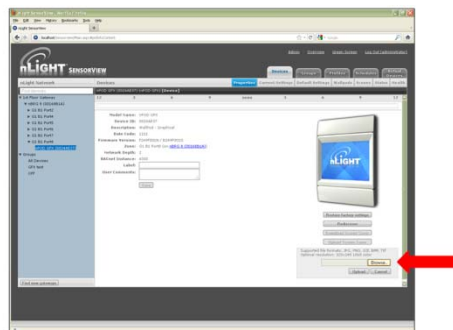
Step 1: Open the SensorView Program

Step 2: Select the *Devices* tab

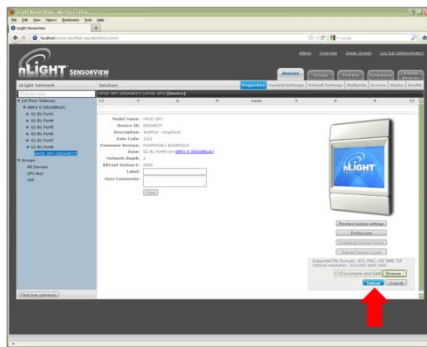
1. Locate the Properties page
2. Select the nPOD-GFX device in the left hand column
3. Select *Upload Screen Saver* in the bottom right hand of the page



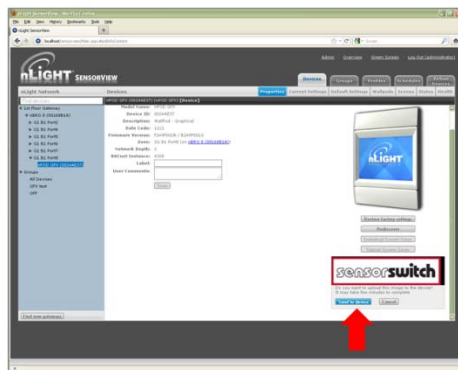
Step 3: On the next screen, select the *Browse* button to find the image from a folder on the computer.



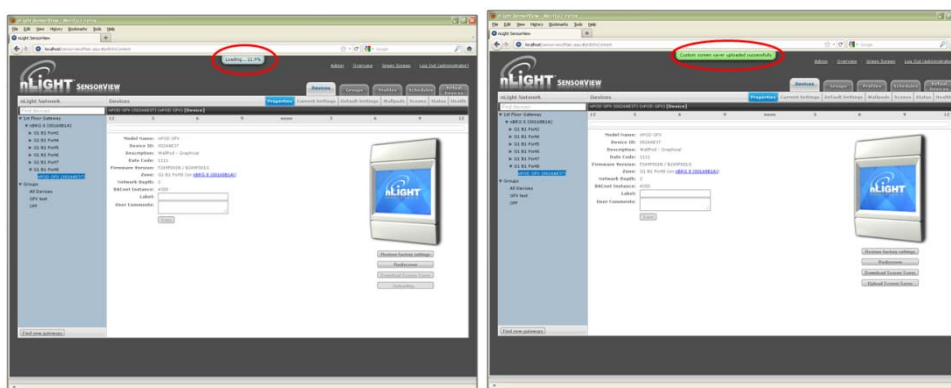
Step 4: Find the file and select the *Upload* button



Step 5: A preview of the image will display in the lower right hand corner of the screen. If acceptable, select the *Send to Device* button



Step 6: The loading percentage will display at the top of the screen as well as the notification the file transfer has completed.



Step 7: Select the Default Setting page for the nPOD-GFX and select Custom Logo as the Screensaver Mode. Select *Save Settings and Apply Now*.

## Firmware Updates for Devices

For the nLight product line, **all device updates must be made from the SensorView Software**. The instructions for updating the firmware are listed below. For information on SensorView, please see the next page.

Below are the instructions for upgrading the firmware for the nLight occupancy sensors.

### Upgrading Devices:

1. Click the “Admin” link in the top right
2. Click the “Updates” tab (or click the “Updates” link from the Overview page)
3. Check the selected items you wish to update (unchecked items will *not* update)
4. Click “Submit” at the bottom of the page

**Downloading Firmware Cache:**  
 Available when internet connection is present & an updated version of SensorView is available, enabling update downloads that are made available to an offline network.  
*Note: This process may be lengthy depending on the size of the network.*

The screenshot shows the 'ADMIN DASHBOARD' with tabs for 'SETUP', 'USER PERMISSIONS', 'UPDATES', 'BACKUP', and 'REPORTS'. The 'UPDATES' tab is active. Below it, there's a section for 'FIRMWARE UPDATES' with a table of devices and their current/firmware versions. At the bottom of this section is a 'Submit' button. A red box highlights the 'Submit' button, and a red arrow points from it back to the 'Admin' link in the top right corner of the dashboard.

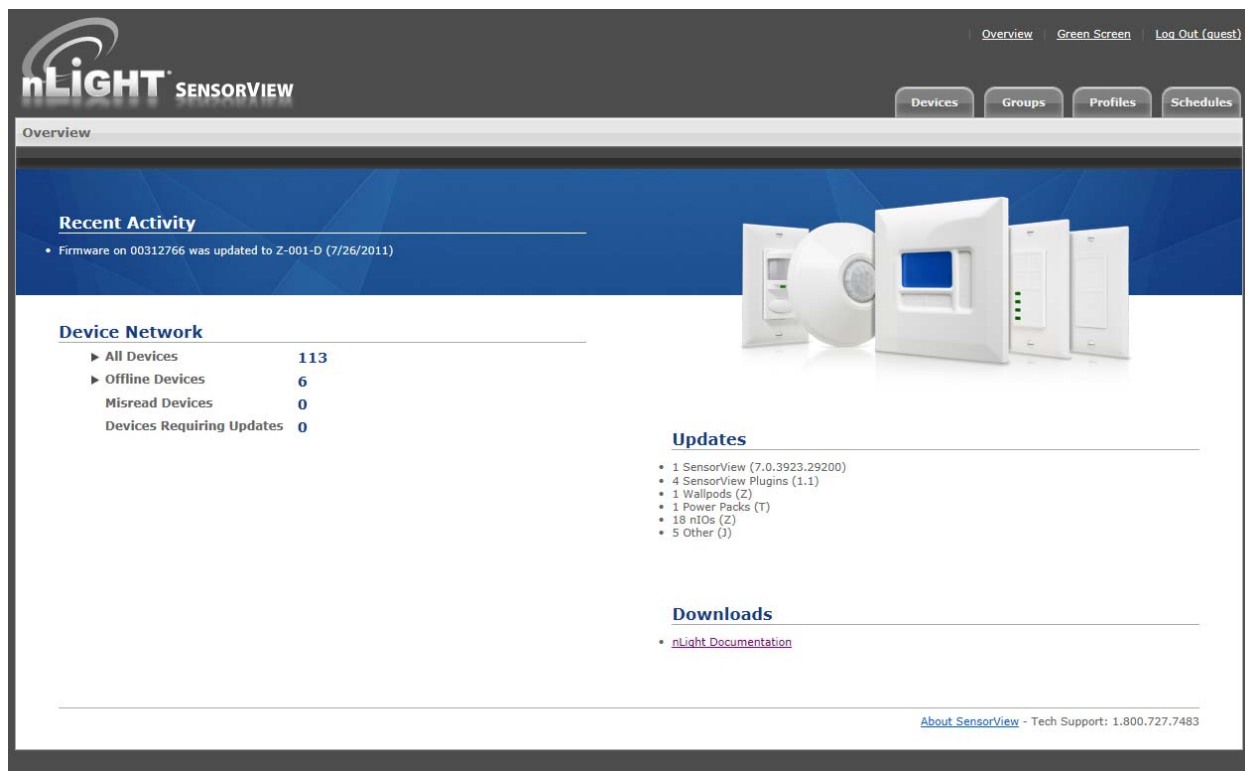
MODEL	MODEL NAME	CURRENT VERSION	FIRMWARE VERSION	STATUS
4850-0-01	4850-0-01	1.0.0	1.0.0	Normal
4850-0-01	4850-0-01	1.0.0	1.0.0	Normal
4850-0-01	4850-0-01	1.0.0	1.0.0	Normal
4850-0-01	4850-0-01	1.0.0	1.0.0	Normal
4850-0-01	4850-0-01	1.0.0	1.0.0	Normal
4850-0-01	4850-0-01	1.0.0	1.0.0	Normal
4850-0-01	4850-0-01	1.0.0	1.0.0	Normal
4850-0-01	4850-0-01	1.0.0	1.0.0	Normal
4850-0-01	4850-0-01	1.0.0	1.0.0	Normal
4850-0-01	4850-0-01	1.0.0	1.0.0	Normal

## SensorView Software

The power of any nLight network is multiplied tenfold by SensorView software. This intuitive and easy to use, web-based suite of applications gives authorized users the ability to remotely configure and monitor every nLight system device. It also provides a simple and quick setup tool for creating custom configuration profiles that can either be scheduled or run on-demand.

The SensorView software package is provided at NO additional charge. For a demo of the software please go to the link below:

<http://www.sensorswitch.com/nLight.aspx>



The screenshot shows the nLIGHT SensorView web interface. At the top right, there are navigation links: Overview, Green Screen, and Log Out (quest). Below these are tabs for Devices, Groups, Profiles, and Schedules. The main content area is titled "Overview" and features a "Recent Activity" section with a single entry: "Firmware on 00312766 was updated to Z-001-D (7/26/2011)". To the right of this section is an image of several white nLight devices. Below the activity section is a "Device Network" table:

Device Network	
▶ All Devices	113
▶ Offline Devices	6
Misread Devices	0
Devices Requiring Updates	0

Below the table is an "Updates" section with a list of updates:

- 1 SensorView (7.0.3923.29200)
- 4 SensorView Plugins (1.1)
- 1 Wallpods (Z)
- 1 Power Packs (T)
- 18 nTos (Z)
- 5 Other (J)

Below the updates is a "Downloads" section with a single link: [nLight Documentation](#). At the bottom right of the page, there is a footer: [About SensorView](#) - Tech Support: 1.800.727.7483.